

GE-80-A.

Frame split, opens down,

Motor suspension, gear cover, axle and armature caps bolted to upper half,

Gear cover has three point suspension,

Waste and oil lubrication,

Maximum axle in motor bearings 5", length of bearing 9",

Armature bearings, pinion end, 3-1/4 x 8-1/2", commutator end 2-3/4 x 7-1/2"

Gearing, total teeth 86, pitch 3, Maximum gear ratio 71/15

Arm. Turns	Field Turns	Commercial H.P.	Arm. R.P.M.	Voltage	Amperes.
3	110	40	510	500	72

Center of axle to bottom of gear cover 12-9/16" (Max. gear ratio)  
 " " " " " " motor, 12-1/8"  
 " " " " face of motor, 29-13/16"  
 " " " " " " motor suspension, 27-3/16"

Overall length of motor along armature shaft, 49-11/16"

Minimum distance between wheel hubs, 48"

Total weight including gear, pinion, gear cover for maximum gear ratio and axle lining, ~~2910~~ lbs.  
2910

Outlines, P-120822

Diagrams 14182,

Photographs, 203471

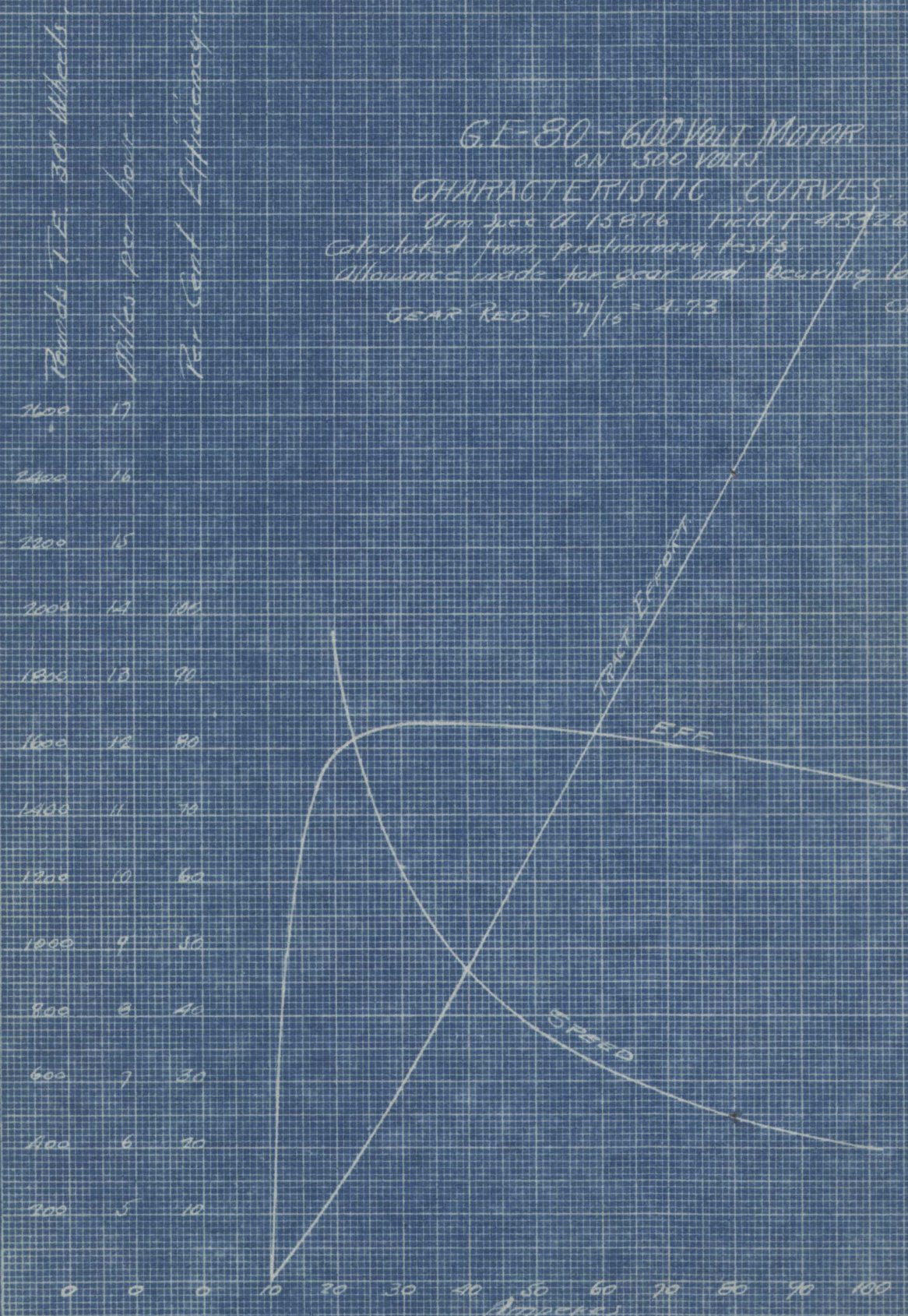
Nov. 11- 1907

IF SHEET IS READ THE OTHER WAY (VERTICALLY), THIS SIDE SHOULD BE LEFT-HAND SIDE.

THIS MARGIN RESERVED FOR BINDING.

**GE-80-600VOLT MOTOR**  
 ON 500 VOLTS  
**CHARACTERISTIC CURVES**  
 Arm spec of 15876 TICKET 43376  
 Calculated from preliminary tests.  
 Allowance made for gear and bearing losses  
 Gear Red -  $\frac{71}{15} = 4.73$

Oct 12 '06  
H.S.



C-3483

GE-80-B

Frame split, opens up.

Motor suspension, gear cover, axle and armature caps bolted to lower half.

Gear cover has three point suspension.

Waste and oil lubrication.

Maximum axle in motor bearings 5", length of bearing 9"

Armature bearings, pinion end, 3-1/4 x 8-1/2", commutator end 2-3/4 x 7-1/2"

Gearing, total teeth 86, pitch 3, Maximum gear ratio 71/15.

Arm. Turns	Field Turns	Commercial H.P.	Arm. R.P.M.	Voltage	Amperes.
3	110	40	510	500	72

Center of axle to bottom of gear cover 12-9/16 (Max. gear ratio).

" " " " " " motor 12-1/8"

" " " " face of motor - 27-5/16"

" " " " " " suspension, 27-3/16"

Overall length of motor along armature shaft, 49-11/16"

Minimum distance between wheel hubs, 48"

Total weight including gear, pinion, gear cover (maximum gear ratio) and axle linings, 2890 lbs.

Outlines, P-195619

Diagrams, 14281

Photographs,

Nov. 11- 1907

Return Tracing  
to  
COMMUNICATIONS BRANCH

GE-80-C

Frame split, Opens up.

Motor suspension, gear cover, axle and armature caps bolted to lower half.

Gear cover has three point suspension.

Waste and oil lubrication.

Maximum axle in motor bearings 5", length of bearing 9".

Armature bearings, pinion end, 3-1/4 x 8-1/2", commutator end 2-3/4 x 7-1/2".

Gearing, total teeth 86, pitch 3, Maximum gear ratio 71/15.

Arm. Turns	Field Turns	Commercial H.P.	Arm. R.P.M.	Voltage	Amperes.
3	110	40	510	500	72

Center of axle to bottom of gear cover, 12-9/16 (Max. gear ratio),

" " " " " " motor, 12-1/8",

" " " " " " face of motor, 27-<sup>7/16</sup>/~~16~~",

" " " " " " suspension, 27-5/16"

Overall length of motor along armature shaft, 49-11/16"

Minimum distance between wheel hubs, 48"

Total weight including gear, pinion, gear cover (maximum gear ratio) and axle linings, 2755 lbs.

Outlines, P-120448                      Photograph 208235

Diagrams, 14340

Photographs, 350922 - ~~208235~~

Nov. 11- 1907

REVISED MAR. 16. 09

Return Training  
to  
INFORMATION BUREAU





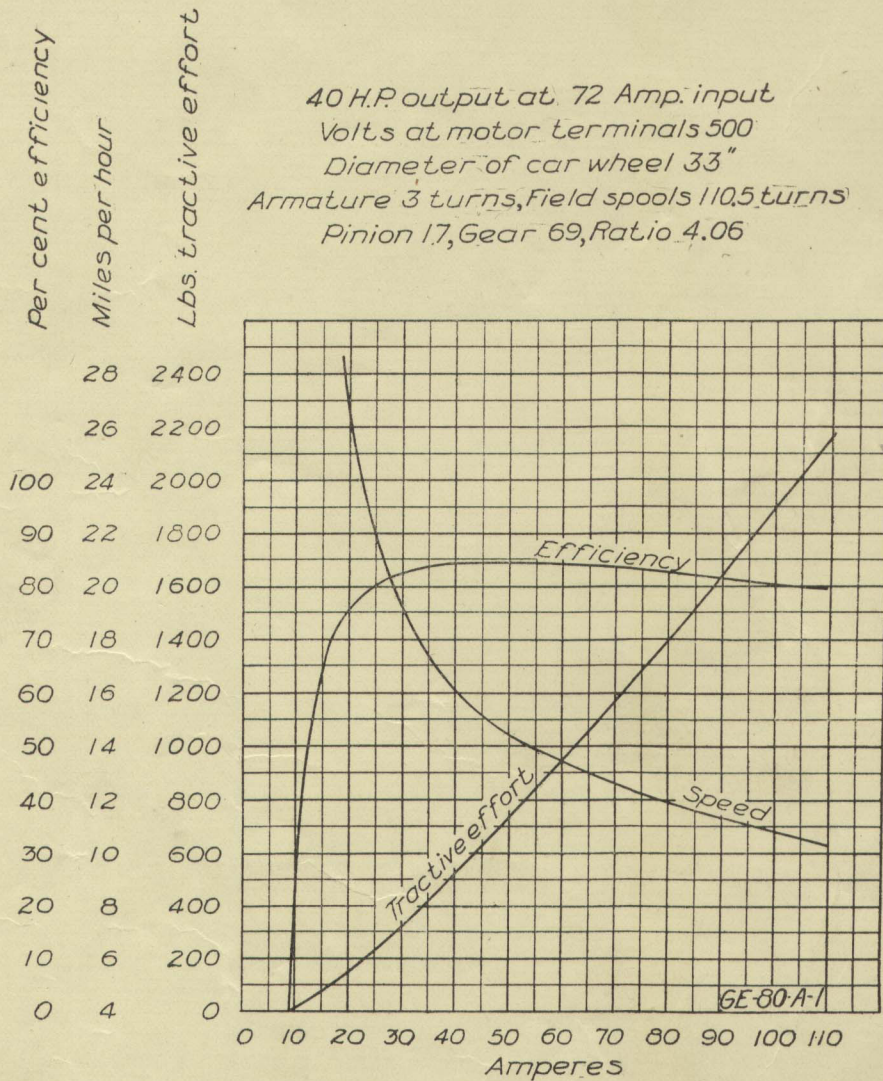
Railway Motor Characteristic Curves

General Electric Co.  
Engineering Dept.

Railway Motor  
Characteristic No. 125

GE-80-A-1

40 H.P. output at 72 Amp. input  
Volts at motor terminals 500  
Diameter of car wheel 33"  
Armature 3 turns, Field spools 110.5 turns  
Pinion 17, Gear 69, Ratio 4.06



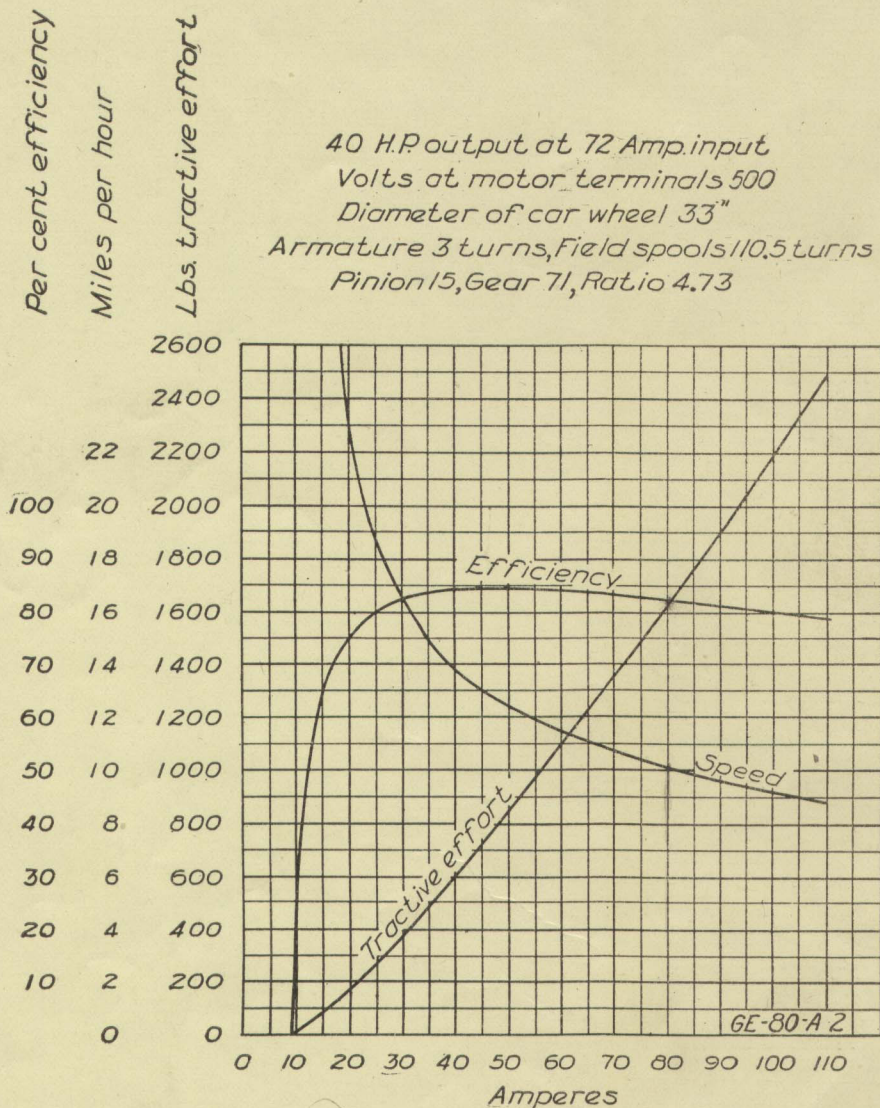
12 Dec. 1904

General Electric Co.  
Engineering Dept.

Railway Motor  
Characteristic No. 126

GE-80-A-2

40 H.P. output at 72 Amp. input  
Volts at motor terminals 500  
Diameter of car wheel 33"  
Armature 3 turns, Field spools 110.5 turns  
Pinion 15, Gear 71, Ratio 4.73



12 Dec. 1904

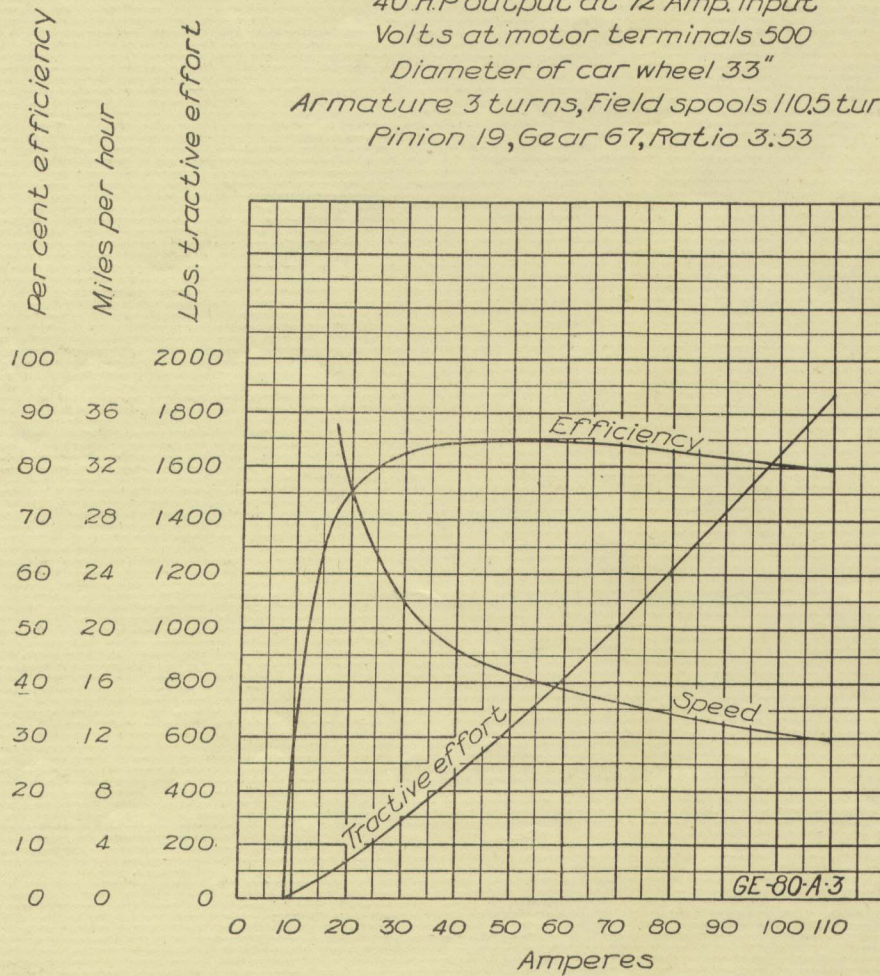


General Electric Co.  
Engineering Dept.

Railway Motor  
Characteristic No. 127

GE-80-A-3

40 H.P. output at 72 Amp. input  
Volts at motor terminals 500  
Diameter of car wheel 33"  
Armature 3 turns, Field spools 110.5 turns  
Pinion 19, Gear 67, Ratio 3.53



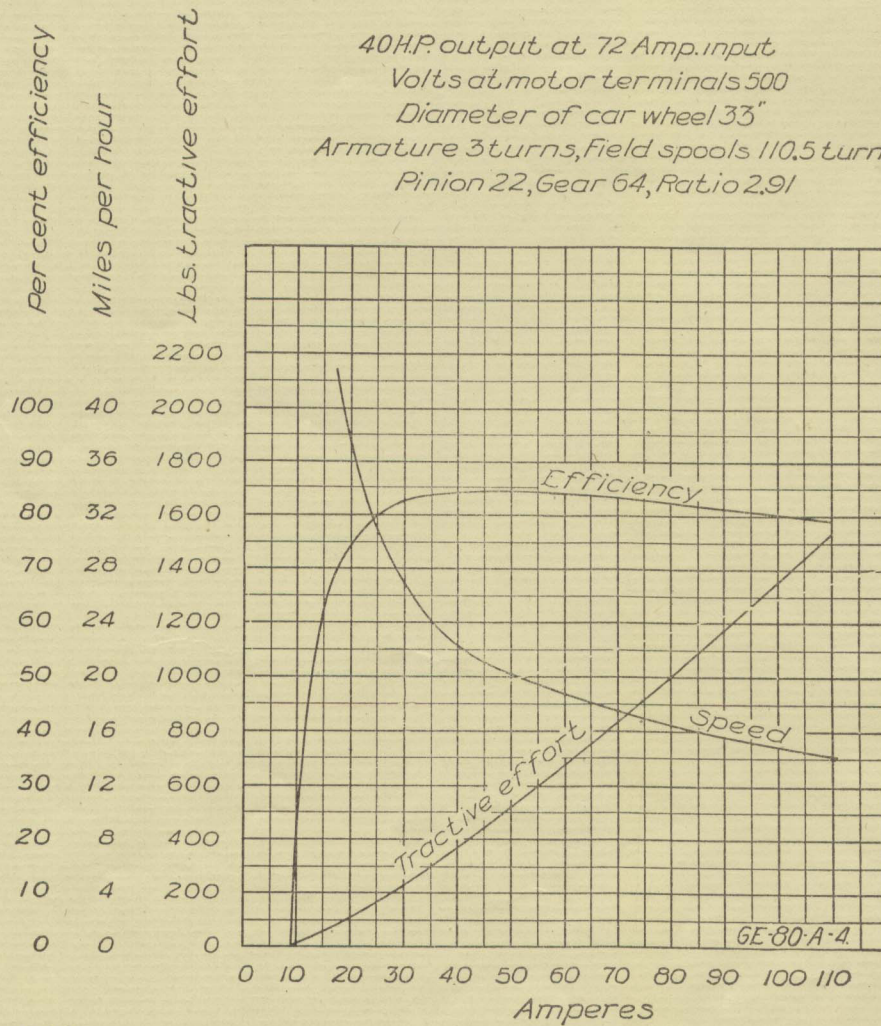
12 Dec. 1904

General Electric Co  
Engineering Dept.

Railway Motor  
Characteristic No. 128

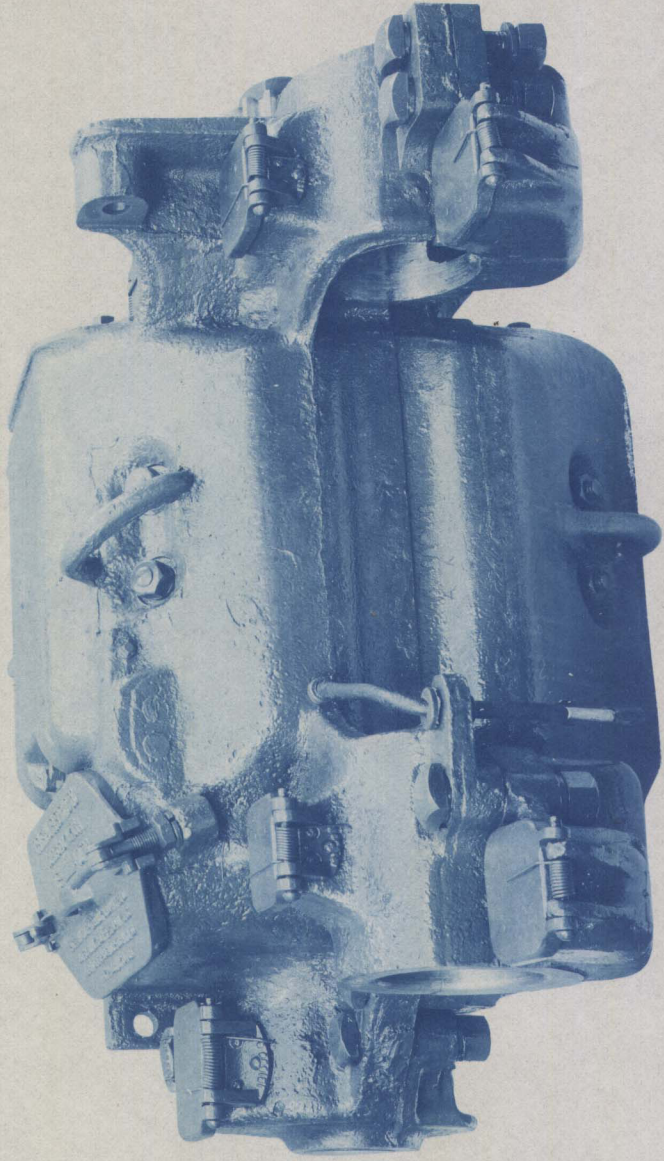
GE-80-A-4

40 H.P. output at 72 Amp. input  
Volts at motor terminals 500  
Diameter of car wheel 33"  
Armature 3 turns, Field spools 110.5 turns  
Pinion 22, Gear 64, Ratio 2.91

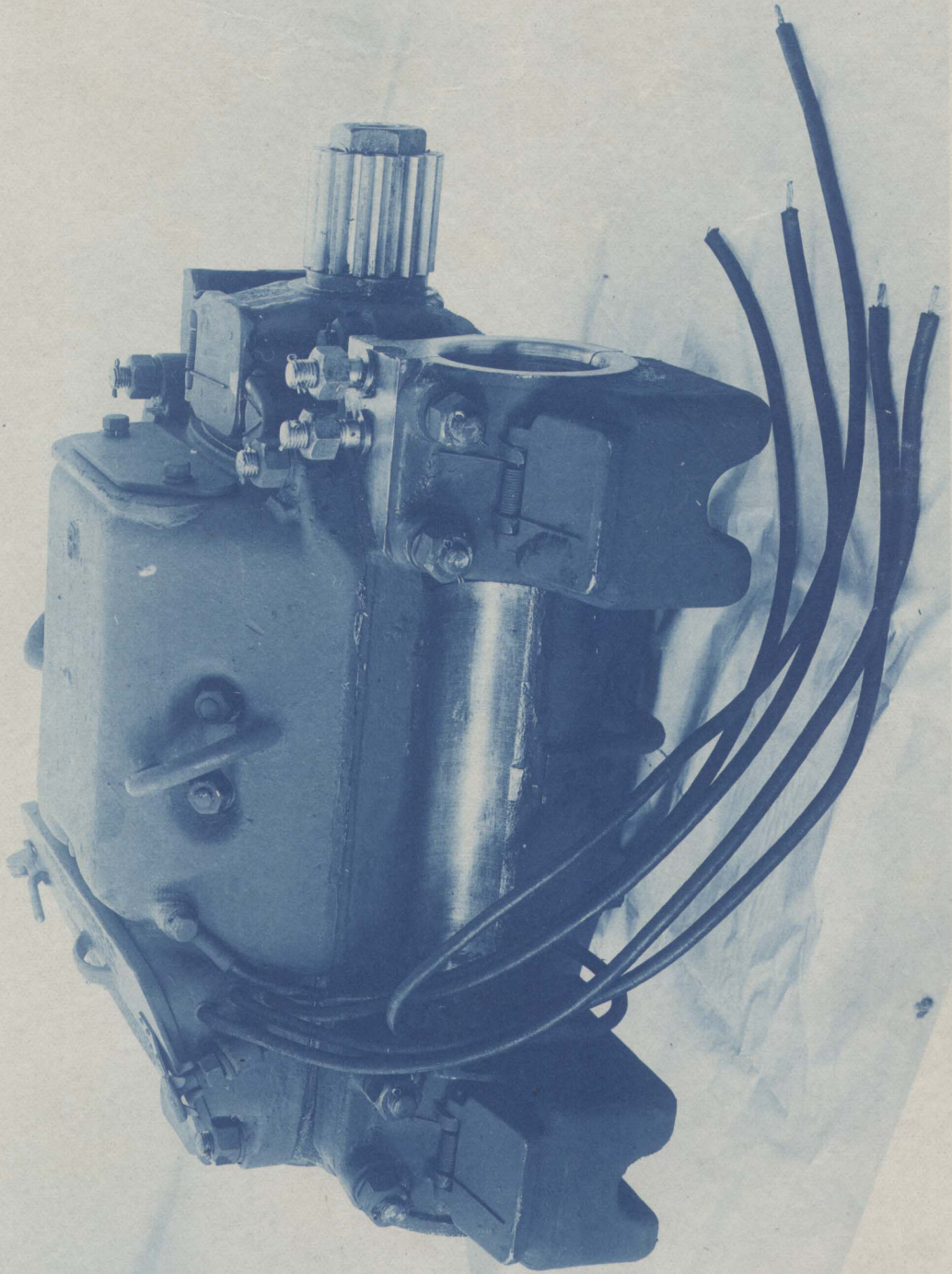


12 Dec. 1904.





203471 GE-80-A RAILWAY MOTOR.



350922 GE-30-C RAILWAY MOTOR.

# General Electric Company

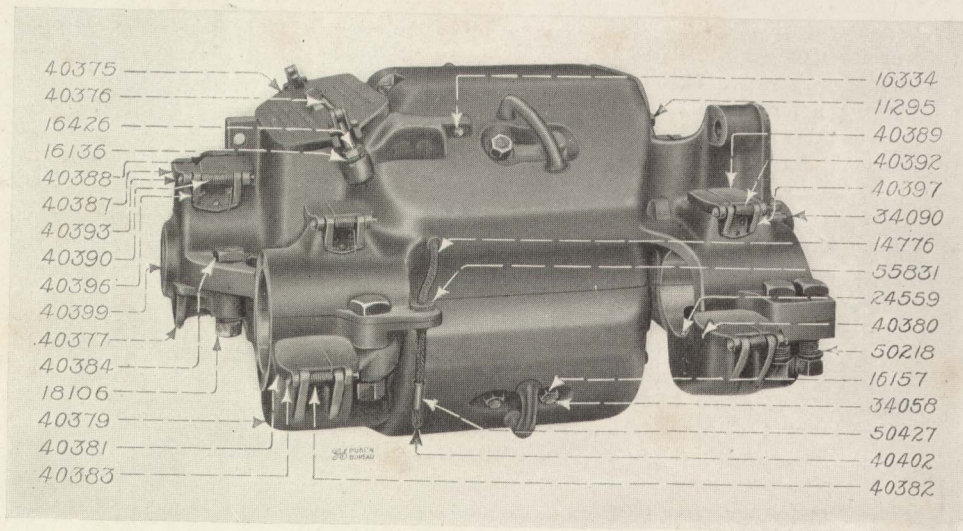
Schenectady, N.Y.

SUPPLY DEPARTMENT

June, 1906

Bulletin No. 4450

## PARTS OF GE-80-A RAILWAY MOTOR



GE-80-A RAILWAY MOTOR

### WEIGHTS

Motor, complete, without axle gear and case .....	2414 lbs.
Armature and pinion .....	637 "
Axle gear (71 teeth) .....	220 "
Gear case .....	166 "

Cat. No.	Description	List Price
40374	FRAME, complete, includes upper and lower field castings, lids, pole pieces, bearing caps and linings and all bolts, pins, etc., fastening parts together.....	\$ 2.75
40375	Lid with felt packing for upper casting, commutator end.....	.45
40376	Cam with eye bolt, fastening lid in position.....	5.00
16426	Nut for cam eye bolt ( $\frac{3}{4}$ "-10, $\frac{1}{2}$ " thick, Hex. Rough.) .....	per 100 5.00
16136	Lock washer for cam eye bolt.....	per 100 5.00
14547	Spring cotter for lid ( $\frac{1}{4}$ " x $2\frac{1}{2}$ " ).....	per 1000 10.00
33980	Lid with rope packing for upper casting, pinion end.....	.60
33981	Lid with rope packing for lower casting, commutator end.....	.75
33982	Lid with rope packing for lower casting, pinion end.....	.50
11295	Cap screw fastening Nos. 33980, 33981, 33982 in position. ( $\frac{5}{8}$ "-11, $1\frac{5}{8}$ " Hex. H.).....	.15
16137	Lock washer for No. 11295.....	per 100 4.00
55831	Soft rubber bushing for use with cables.....	.10

GENERAL ELECTRIC COMPANY

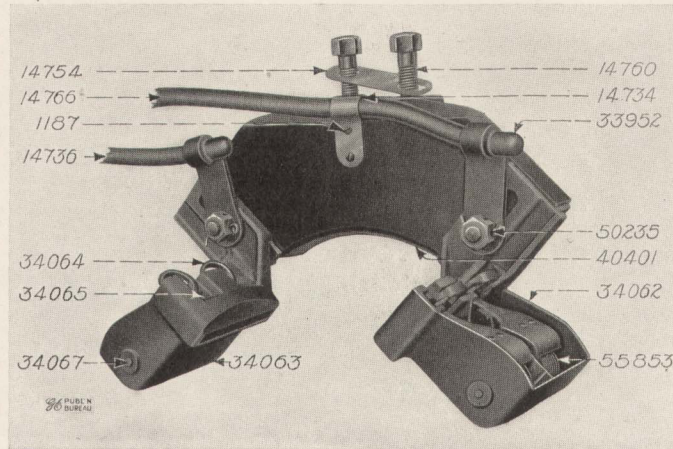
4450-2 Parts of GE-80-A Railway Motor

Cat. No.	Description	List Price
40377	*ARMATURE BEARING CAP, commutator end.....	\$10.00
40378	*Armature bearing cap, pinion end.....	11.00
40379	*Axle bearing cap, commutator end.....	9.00
40380	*Axle bearing cap, pinion end.....	10.00
24559	Dowel pin for axle bearing caps ( $\frac{5}{8}$ " x $1\frac{5}{16}$ ").....	.06
40381	Lid for axle bearing cap grease chamber.....	.75
40382	Spring for lid (9 turns .102" steel wire.).....	.06
40383	Hinge pin for lid ( $\frac{3}{8}$ " x $3\frac{13}{16}$ " R. H.).....	per 100 3.00
40383	Spring cotter for No. 40383 ( $\frac{3}{32}$ " x $\frac{5}{8}$ ").....	per 1000 2.00
40384	Bolt fastening upper and lower field castings together and bearing caps in position, ( $1\frac{1}{8}$ "-7, $5\frac{1}{8}$ " Sq. H. Sp'l.).....	.35
40385	Hinge bolt ( $1\frac{1}{8}$ "-7, $3\frac{5}{8}$ " Sp'l.).....	.70
18106	Nut for Nos. 40384, 40385 ( $1\frac{1}{8}$ "-7, Hex. Rough).....	.15
50218	Lock washer for No. 18106.....	per 100 8.00
40386	Hinge pin for frame ( $1$ " x $4\frac{3}{4}$ ").....	.20
16323	Spring cotter for pin ( $\frac{3}{16}$ " x $1\frac{1}{2}$ ").....	per 1000 3.00
40387	Large lid for armature bearing grease chamber, commutator and pinion ends.....	1.50
40388	Small lid for armature bearing grease chamber, commutator and pinion ends.....	.50
40389	Lid for axle bearing grease chamber, commutator and pinion ends.....	1.00
40390	Spring for No. 40387 (15 turns, .129" steel wire).....	.06
40391	Spring for No. 40388 (8 turns, .091" steel wire).....	.06
40392	Spring for No. 40389 (10 turns, .102" steel wire).....	.06
40393	Hinge pin for No. 40387 ( $\frac{3}{8}$ " x $4\frac{5}{16}$ " R. H.).....	per 100 3.00
40394	Hinge pin for No. 40388 ( $\frac{3}{8}$ " x $3\frac{5}{16}$ " R. H.).....	per 100 3.00
40383	Hinge pin for No. 40389 ( $\frac{3}{8}$ " x $3\frac{13}{16}$ " R. H.).....	per 100 3.00
40383	Spring cotter for Nos. 40393, 40394, 40383 ( $\frac{3}{32}$ " x $\frac{5}{8}$ ").....	per 1000 2.00
40396	Hinge bracket with rivets for No. 40387.....	.25
40397	Hinge bracket with rivets for No. 40389.....	.20
33984	Socket pipe plug for lower casting (1" pipe).....	.08
16334	Pipe plug for upper casting ( $\frac{3}{8}$ " pipe).....	.05
34058	Bolt fastening pole pieces to frame ( $\frac{7}{8}$ "-9, 5" Sq. H.).....	.28
16157	Nut for No. 34058 ( $\frac{7}{8}$ "-9, Hex. Rough).....	per 100 10.00
16135	Lock washer for No. 16157.....	per 100 5.00
39339	Suspension bolt ( $1\frac{1}{8}$ "-7, $3\frac{3}{4}$ " Sq. H.).....	.40
18106	Nut for No. 39339 ( $1\frac{1}{8}$ "-7, Hex. Rough).....	.15
50218	Lock washer for No. 18106.....	per 100 8.00
38649	AXLE BEARING LINING, malleable iron and babbitt (2 halves, $3\frac{3}{4}$ " bore).....	16.50
38696	Axle bearing lining, malleable iron and babbitt (2 halves, 4" bore).....	16.50
38697	Axle bearing lining, malleable iron and babbitt (2 halves, $4\frac{1}{4}$ " bore).....	16.50
38698	Axle bearing lining, malleable iron and babbitt (2 halves, $4\frac{1}{2}$ " bore).....	16.50
38694	Armature bearing lining, commutator end, brass and babbitt.....	12.75
38695	Armature bearing lining, pinion end, brass and babbitt.....	18.25
40399	Plug for No. 38694.....	.08
40400	BRUSH-HOLDER YOKE, complete, with holder and cables.....	25.00
40401	Brush holder yoke with end plates, brackets, cap screws and rivets for brush holder body.....	4.00
13852	Screw fastening end plate to yoke (No. 10, $\frac{7}{8}$ " F. H.).....	per 100 .50
34060	Right-hand brush-holder, complete.....	6.50
34061	Left-hand brush-holder, complete.....	6.50
34062	Right-hand body, with pins.....	3.50
34063	Left-hand body, with pins.....	3.50
34064	Pressure arm, with contact spring and flexible pig-tail connector.....	1.50
34065	Contact spring with tip and rivets.....	.75
55852	Flexible pig-tail connector for No. 34064.....	.20

\*Must be fitted,

Parts of GE-80-A Railway Motor 4450-3

Cat. No.	Description	List Price
55853	Tension spring (10 turns, .090" steel wire.)	\$ 0.25
24591	Side washer for tension spring ( $\frac{1}{2}$ " x $1\frac{3}{8}$ " x .031" Brass.)	per 100 2.00
34066	Pin for tension spring ( $\frac{3}{16}$ " x 4")	.02
34067	Hinge pin for pressure arm ( $\frac{1}{4}$ " x $4\frac{1}{8}$ " R.H.)	.02
10110	Spring cotter for No. 34067 ( $\frac{5}{64}$ " x $\frac{1}{2}$ ")	per 1000 2.00
50235	Crown nut for cap screw fastening brush-holder body to yoke ( $\frac{1}{2}$ ", 13 Hex. Sp'l.)	per 100 4.00
14760	Cap screw fastening yoke to frame ( $\frac{5}{8}$ "-11, $1\frac{1}{8}$ " Hex. H.)	per 100 10.00
14754	Washer plate for No. 14760	per 100 3.00
14766	Right-hand cable with tip (46" long 49 No. 22 B. & S. wire)	1.30
14736	Left-hand cable with tip (36" long 49 No. 22 B. & S. wire)	1.20
33952	Tip for cables	.30
14734	Clip for right-hand cable	.04
1187	Screw for clip (No. 10, $\frac{7}{8}$ " R. H.)	per 100 1.00
34070	CARBON BRUSH ( $2\frac{1}{4}$ " long, $1\frac{1}{8}$ " wide, $\frac{1}{2}$ " thick,) 2 required for each holder, 4 for each motor	per 100 15.00



BRUSH HOLDERS AND BRUSH HOLDER YOKE

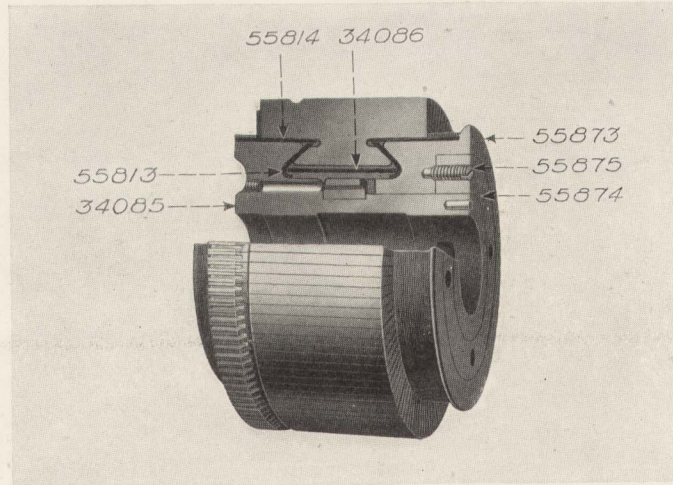
55857	FIELD COIL, complete, for 3 turn armature.	30.00
55859	Flange for field coil.	.70
55860	Oiled canvas pad for field coil.	.20
55861	Outside terminal with connection strip and screws, for No. 55857.	.45
55863	Inside terminal with connection strip and screws, for No. 55857.	.45
893	Screw for terminals (10-24, $\frac{3}{8}$ " R. H.)	per 100 .60
14774	Inside connection cable for field coils (7" long, 49 No. 22 B. & S. wire)	.20
14777	Long cable for field coils (52" long, 49 No. 22 B. & S. wire)	1.00
14776	Short cable for upper field coil (21" long, 49 No. 22 B. & S. wire)	.40
40402	Short cable with connector for lower field coil (24" long, 49 No. 22 B. & S. wire.)	.45
50427	Two way connector with screws for No. 40402.	.15
6081	Screw for connector (10-24, $\frac{3}{8}$ " R. H. Blued)	per 100 .50
40403	Ground cable with terminal (36" long, 49 No. 22 B. & S. wire)	1.15
11295	Cap screw fastening ground cable terminal to frame ( $\frac{5}{8}$ "-11, $1\frac{1}{8}$ " Hex. H.)	.15
16137	Lock washer for No. 11295.	per 100 4.00
34075	Axle key (1" x 1" x $6\frac{3}{8}$ " long, round ends)	.40



GENERAL ELECTRIC COMPANY

4450-4 Parts of GE-80-A Railway Motor

Cat. No.	Description	List Price
40404	*Adjustable axle collar, 2 halves (3 $\frac{3}{4}$ " axle).....	\$6.00
34096	*Adjustable axle collar, 2 halves (4" axle).....	6.00
40405	*Adjustable axle collar, 2 halves (4 $\frac{1}{4}$ " axle).....	6.00
34097	*Adjustable axle collar, 2 halves (4 $\frac{1}{2}$ " axle.).....	6.00
34098	*Adjustable axle collar, 2 halves (5" axle.).....	6.00
17983	Screw for adjusting axle collars from 3 $\frac{1}{4}$ " to 5 $\frac{1}{8}$ " (1"-8, 3 $\frac{3}{16}$ " Sp'l.).....	.70
34076	Bolt for collar (3 $\frac{3}{4}$ "-10, 4 $\frac{1}{4}$ " Sq. H.).....	.20
16326	Nut for bolt (3 $\frac{3}{4}$ "-10, Hex. Rough)..... per 100	10.00
16136	Lock washer for nut..... per 100	5.00
17985	Spring cotter for adjusting screw (3 $\frac{3}{16}$ " x 2 $\frac{1}{4}$ " )..... per 1000	6.00
30102	Split Gear, 64 teeth, 4" bore.....	32.15
30103	Split gear, 64 teeth, 4 $\frac{1}{4}$ " bore.....	32.25
30104	Split gear, 64 teeth, 4 $\frac{1}{2}$ " bore.....	31.65
30105	Split gear, 64 teeth, 5" bore.....	32.00
30106	Split gear, 64 teeth, 5 $\frac{1}{2}$ " bore.....	32.50



COMMUTATOR

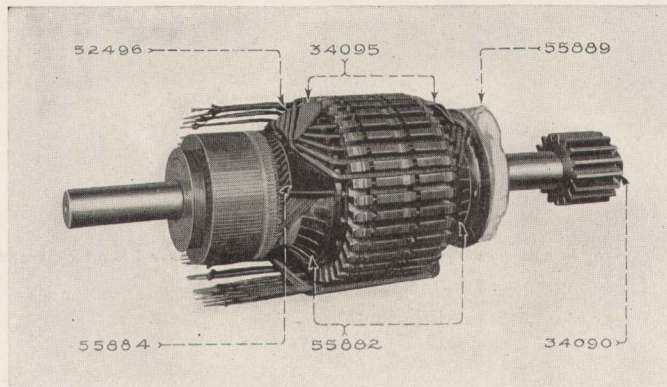
28394	† Pinion, Grade "D," 22 teeth, 2 $\frac{3}{4}$ " taper bore for use with Nos. 30102, 30103, 30104, 30105, 30106.....	14.10
	‡ Pinion, Grade "C" (Identical with above except quality of material employed) Same catalogue number.....	7.90
30097	Split gear, 67 teeth, 4" bore.....	33.00
30098	Split gear, 67 teeth, 4 $\frac{1}{4}$ " bore.....	33.15
30099	Split gear, 67 teeth, 4 $\frac{1}{2}$ " bore.....	32.35
30100	Split gear, 67 teeth, 5" bore.....	32.80
30101	Split gear, 67 teeth, 5 $\frac{1}{2}$ " bore.....	33.20
28395	† Pinion, Grade "D," 19 teeth, 2 $\frac{3}{4}$ " taper bore for use with Nos. 30097, 30098, 30099, 30100, 30101.....	11.00
	‡ Pinion, Grade "C" (Identical with above except quality of material employed) Same catalogue number.....	6.10

\* Does not include adjusting screw.

† Grade "D" pinion furnished with all original equipments.

‡ Unless otherwise designated supply orders will be filled with Grade "C."

Cat. No.	Description	List Price
30094	Split gear, 69 teeth, 4" bore.....	\$33.90
30095	Split gear, 69 teeth, 4¼" bore.....	34.00
30096	Split gear, 69 teeth, 4½" bore.....	33.25
28586	Split gear, 69 teeth, 5" bore.....	33.75
28573	Split gear, 69 teeth, 5½" bore.....	34.00
28350	† Pinion, Grade "D," 17 teeth, 2¾" taper bore for use with Nos. 30094, 30095, 30096, 28586, 28573.....	9.00
	‡ Pinion, Grade-"C" (Identical with above except quality of material employed) Same catalogue number.....	5.00
26607	Split gear, 71 teeth, 4" bore.....	35.20
30065	Split gear, 71 teeth, 4¼" bore.....	35.25
30050	Split gear, 71 teeth, 4½" bore.....	34.65
26681	Split gear, 71 teeth, 5" bore.....	35.00
26682	Split gear, 71 teeth, 5½" bore.....	35.35
28387	† Pinion, Grade "D," 15 teeth 2¾" taper bore for use with Nos. 26607, 30065, 30050, 26681, 26682.....	7.90
	‡ Pinion, Grade-"C" (Identical with above except quality of material employed) Same catalogue number.....	4.40



ARMATURE

39536	GEAR CASE (D. L. 37909) complete, adapted for use with gear having 8" hub diameter, Max. gear 71 teeth, Max. pinion 23 teeth (Malleable Iron).....	37.50
34099	Lid for oil hole, with spring and hinge pin complete.....	1.25
34078	Spring for lid (15½ turns, .102" steel wire).....	.15
34079	Hinge pin for lid (⅜" x 5").....	.04
40384	Bolt fastening halves of gear case together and fastening to frame. (1⅛"-7, 5⅛" Sq. H. Sp'l).....	.35
18106	Nut for No. 40384 (1⅛"-7, Hex. Rough).....	.15
50218	Lock washer for No. 18106.....	per 100.. 8.00
40406	§ ARMATURE 3 turn, complete, with thrust collars and pinion (No.9 B.&S.E.D.C.C.wire.)	375.00
36848	** Armature coil, 3 turn, No. 9 B. & S. (.114" E. D. C.C. wire) per set of 37.....	45.00

† Grade "D" pinion furnished with all original equipments.

‡ Unless otherwise designated supply orders will be filled with Grade "C."

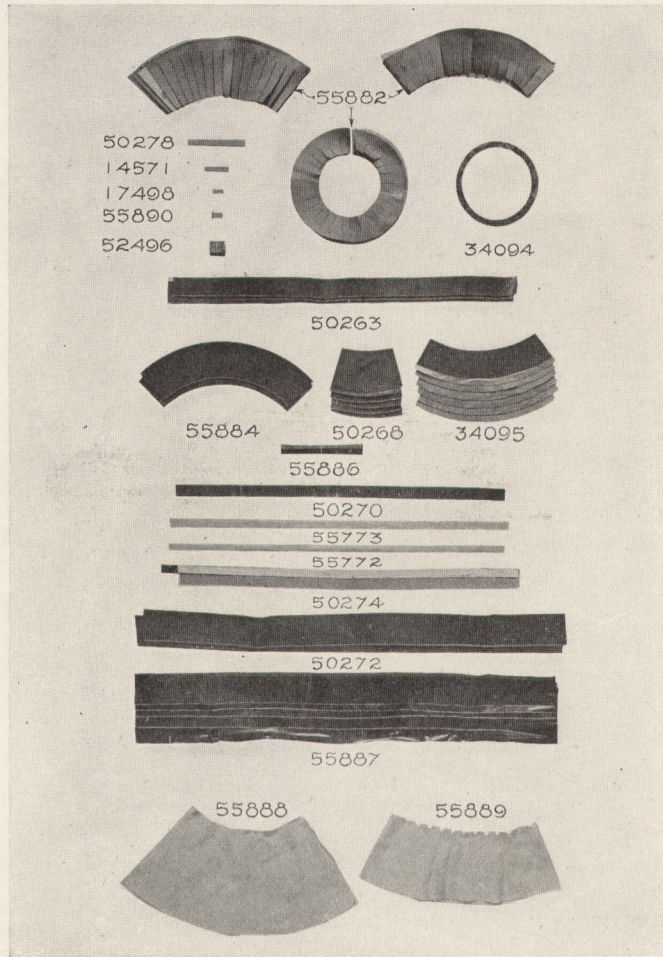
§ Number of teeth in pinion must be specified.

\*\* 37 coils in complete set for one armature, Cat. No. is for one coil.

GENERAL ELECTRIC COMPANY

4450-6 Parts of GE 80-A Railway Motor

Cat. No.	Description	List Price
34084	COMMUTATOR, complete.....	\$145.00
34085	Shell .....	8.00
55873	Cap .....	4.75
55874	Nut .....	1.35
55875	Set screw for nut ( $\frac{3}{8}$ "-16, $1\frac{3}{16}$ " Pointed Headless).....per 100	5.00
55876	Key for shell ( $\frac{3}{8}$ " x $\frac{3}{8}$ " x $1\frac{1}{4}$ " round ends).....	.25



INSULATIONS

33739	Set of copper and mica segments, finished and bound (111 segments).....	51.00
34086	Mica collar under segments.....	.70
55813	Inner mica cone.....	1.00
55814	Outer mica cone ( $2\frac{5}{8}$ " wide).....	2.00
34087	Shaft bare.....	30.00
55878	Key for shaft ( $\frac{1}{2}$ " x $\frac{1}{2}$ " x $14\frac{3}{4}$ ").....	.30
34088	Key for commutator ( $\frac{3}{8}$ " x $\frac{1}{2}$ " x $5\frac{7}{8}$ ").....	.25
34089	Key for pinion ( $\frac{5}{8}$ " x $\frac{5}{8}$ " x $4\frac{7}{8}$ " round end).....	.25

GENERAL ELECTRIC COMPANY

Parts of GE-80-A Railway Motor 4450-7

Cat. No.	Description	List Price
34090	Pinion nut.....	\$0.75
34091	Lock washer for nut (1 <sup>3</sup> / <sub>16</sub> " x 4 <sup>1</sup> / <sub>16</sub> " x .062" Sp1).....	.04
40407	Thrust collar, commutator end.....	3.00
40408	Thrust collar, pinion end.....	4.00
34094	Mica ring back of commutator segments (7 <sup>1</sup> / <sub>4</sub> " x 9" x <sup>1</sup> / <sub>16</sub> " thick).....	.95
55882	Set of insulations for armature core, includes 5 thicknesses .010" red paper, 4 thicknesses .008" oiled cotton (5 <sup>5</sup> / <sub>8</sub> " wide) for commutator end, 5 thicknesses .010" red paper, 4 thicknesses .008" oiled cotton (4" wide) for pinion end, and 5 thicknesses .010" red paper, 4 thicknesses .008" oiled cotton (11 <sup>1</sup> / <sub>2</sub> " outside diameter, 6 <sup>1</sup> / <sub>2</sub> " inside diameter, slotted edge) for core head flange pinion end, per set.....	2.50
50263	Set of oiled asbestos insulations over layer of rope, just back of commutator (40" long 2" wide, .040" thick, 3 in set), per set.....	.15
55884	Set of japanned canvas and oiled cotton insulations over short leads under coils (2 thicknesses of canvas, 1 of oiled cotton, 18" long, 3 <sup>3</sup> / <sub>4</sub> " wide) per set.....	.45
34095	Set of japanned canvas and oiled cotton insulations between inner and outer turns of coils, commutator and pinion ends (14 <sup>3</sup> / <sub>4</sub> " long, 3 <sup>3</sup> / <sub>4</sub> " wide, for pinion end, 3 <sup>3</sup> / <sub>8</sub> " wide for commutator end, 6 in set 3 at each end) per set.....	.95
52496	Set of japanned canvas insulations under long leads at bend of coils, commutator end (1 <sup>1</sup> / <sub>2</sub> " x 1 <sup>1</sup> / <sub>4</sub> ", 37 in set), per set.....	.25
50268	Set of japanned canvas and oiled cotton insulations over coils between long and short leads (7 <sup>1</sup> / <sub>2</sub> " long, 4 <sup>1</sup> / <sub>2</sub> " wide, 6 in set), per set.....	.50
50270	Strip of japanned canvas and oiled cotton insulation over ends of short leads just back of commutator (34" long, 1 <sup>1</sup> / <sub>2</sub> " wide).....	.08
55886	Set of japanned press boards between inner and outer coils in slots (8 <sup>1</sup> / <sub>2</sub> " x <sup>1</sup> / <sub>2</sub> " x .031" thick, 37 in set), per set.....	.40
55772	Red paper center band under binding wire (50" long, <sup>3</sup> / <sub>4</sub> " wide, .010" thick),..... per 100	.45
50272	Strip of japanned canvas over coils, commutator and pinion ends (45" long, 3" wide, 2 in set), per set.....	.20
55887	Set of varnished cambric dressings, commutator and pinion ends (6 pieces in set, 3 at each end, consists of two strips 3 <sup>1</sup> / <sub>2</sub> " wide and one each strips 4 <sup>1</sup> / <sub>4</sub> ", 4 <sup>1</sup> / <sub>2</sub> ", 4 <sup>3</sup> / <sub>4</sub> " and 7" wide, 46" long), per set.....	1.60
50274	Insulation band back of commutator (cotton drill, oiled cotton, red paper, mica and asbestos, 36" long, 2" wide).....	.30
55888	Outside dressing, commutator end.....	.35
55889	Outside dressing, pinion end, slotted edge.....	.40
55773	Red paper band over dressing at ends of slots (50" long, <sup>15</sup> / <sub>16</sub> " wide, .010" thick) per 100	.50
50278	Binding clip (6" x <sup>5</sup> / <sub>8</sub> " x .020" tin)..... per 1000	10.00
14571	Binding clip (2 <sup>1</sup> / <sub>2</sub> " x <sup>1</sup> / <sub>2</sub> " x .010" tin)..... per 1000	2.00
17498	Binding clip (1 <sup>3</sup> / <sub>16</sub> " x <sup>3</sup> / <sub>8</sub> " x .010" tin)..... per 1000	2.00
55890	T shaped binding clip (1 <sup>1</sup> / <sub>8</sub> " x <sup>1</sup> / <sub>2</sub> " x .020" tin)..... per 1000	3.50
	Acme tape used in connecting and binding armature ( <sup>3</sup> / <sub>4</sub> " wide) cord for filling ( <sup>3</sup> / <sub>16</sub> " diam. hemp); cord for dressing No. 8; binding wire is .045" tinned steel, requiring approximately 375 feet.	

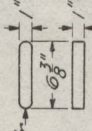
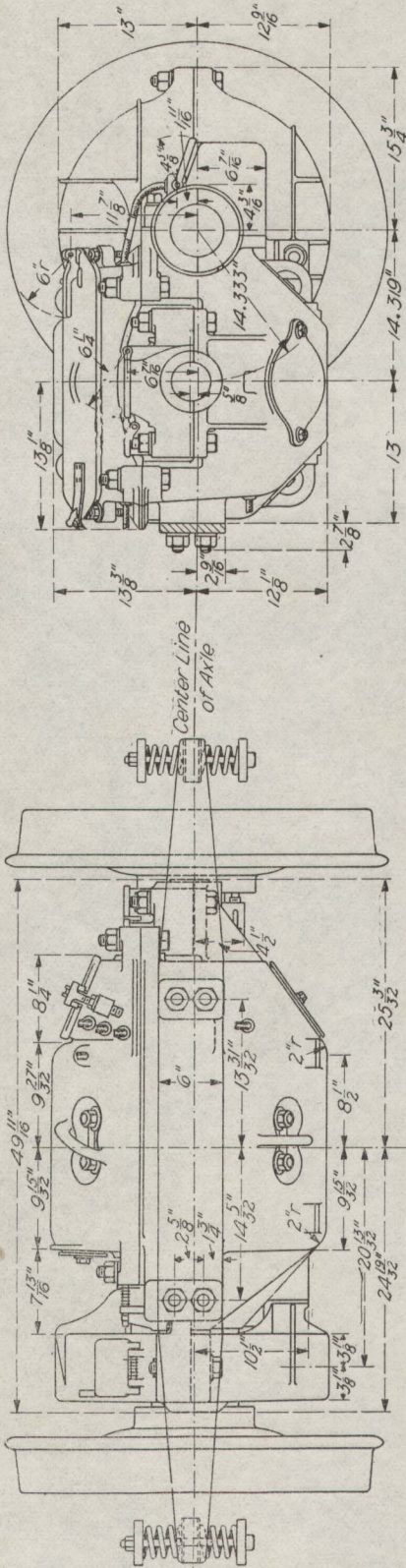
GENERAL ELECTRIC COMPANY

4450-8 Parts of GE-80-A Railway Motor

Index to Catalogue Numbers

No.	Page	No.	Page	No.	Page	No.	Page	No.	Page	No.	Page
895	3	18106	2, 5	33952	3	34095	7	40388	2	52496	7
1187	3	24559	2	33980	1	34096	4	40389	2	55772	7
4030	2	24591	3	33981	1	34097	4	40390	2	55773	7
6081	3	26607	5	33982	1	34098	4	40391	2	55813	6
10110	3	26681	5	33984	2	34099	5	40392	2	55814	6
11295	1, 3	26682	5	34058	2	36848	5	40393	2	55831	1
13852	2	28350	5	34060	2	38649	2	40394	2	55852	2
14547	1	28387	5	34061	2	38694	2	40396	2	55853	3
14571	7	28394	4	34062	2	38695	2	40397	2	55857	3
14734	3	28395	4	34063	2	38696	2	40399	2	55859	3
14736	3	28573	5	34064	2	38697	2	40400	2	55860	3
14754	3	28586	5	34065	2	38698	2	40401	2	55861	3
14760	3	30050	5	34066	3	39339	2	40402	3	55863	3
14766	3	30065	5	24067	3	39536	5	40403	3	55873	6
14774	3	30094	5	34070	3	40374	1	40404	4	55874	6
14776	3	30095	5	34075	3	40375	1	40405	4	55875	6
14777	3	30096	5	34076	4	40376	1	40406	5	55876	6
16135	2	30097	4	34078	5	40377	2	40407	7	55878	6
16136	1, 4	30098	4	34079	5	40378	2	40408	7	55882	7
16137	1, 3	30099	4	34084	6	40379	4	50218	2, 5	55884	7
16157	2	30100	4	34085	6	40380	2	50235	3	55886	7
36323	2	30101	4	34086	6	40381	2	50263	7	55887	7
16326	4	30102	4	34087	6	40382	2	50268	7	55888	7
16334	2	30103	4	34088	6	40383	2	50270	7	55889	7
16426	1	30104	4	34089	6	40384	2, 5	50272	7	55890	7
17498	7	30105	4	34090	7	40385	2	50474	7		
17983	4	30106	4	34091	7	40386	2	50278	7		
17985	4	33739	6	34094	7	40387	2	50427	3		

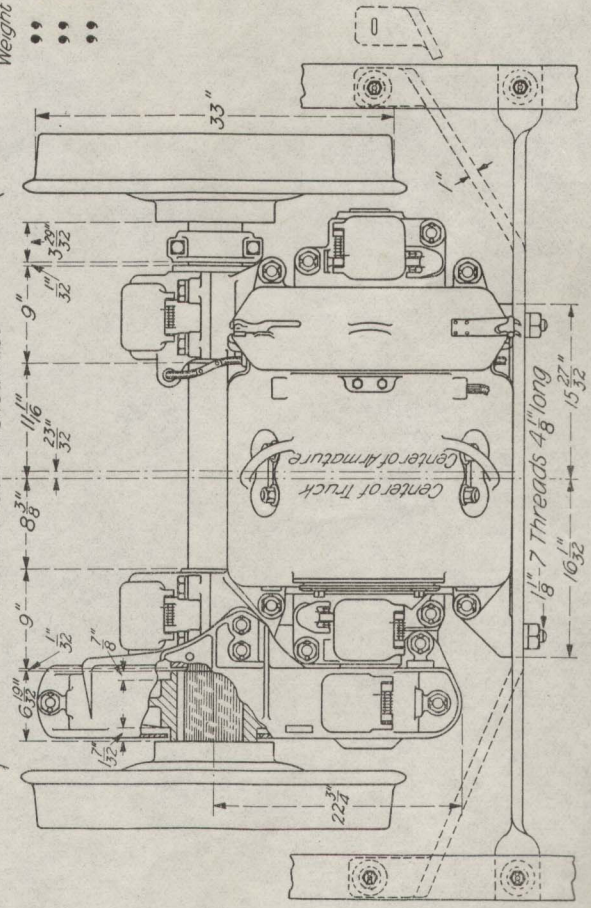
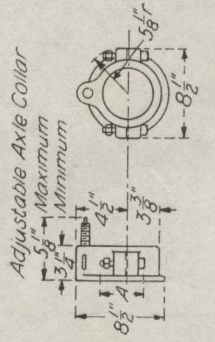
# DIMENSIONS OF GE-80-C MOTOR



Diam. of Axle	
A	3
B	5 1/2

Dimensions of unfinished parts are subject to a small variation  
 Weights of pinion and gear change with ratio of gearing  
 Weight of Motor complete without axle gear and case

Armature and Pinion	2349 Lbs.
Axle Gear (71 teeth)	637
Gear Case	230
	176



Approved *E. W. Rice*  
 Chief Engineer

ENGINEERING DEPT.  
 GENERAL ELECTRIC COMPANY

No. 14340

For REFERENCE ONLY unless endorsed on back.  
 1 NOV. 1907